

PEYIA CHORIO 2

PAFOS - CYPRUS



Sea views from Peyia village





Peyia Chorio apartments are carefully blended into the project in low rise blocks to compliment the 2 storey houses.



Peyia Chorio 2

Block 1 Apartment 109

Bedrooms	3
Bathrooms	2

Parking	Private allocated space on the ground floor
---------	---

Storage	1 room on the ground floor
---------	----------------------------

Covered internal areas	91.10 m ²
------------------------	----------------------

Covered balcony	13.62 m ²
-----------------	----------------------

Private garden area	80.00 m ²
---------------------	----------------------



REVISIONS

PA
PROPER

33 Nicodemus
Marina, Co.
P.O. Box 64
TEL. 0035
FAX. 0035
E-mail: info@nicodemus.com

Children's
1111 Nicodemus
Office 10
TEL. 0035
FAX. 0035

JOB

PH

DRNG TITL

DRAWN

CHECK

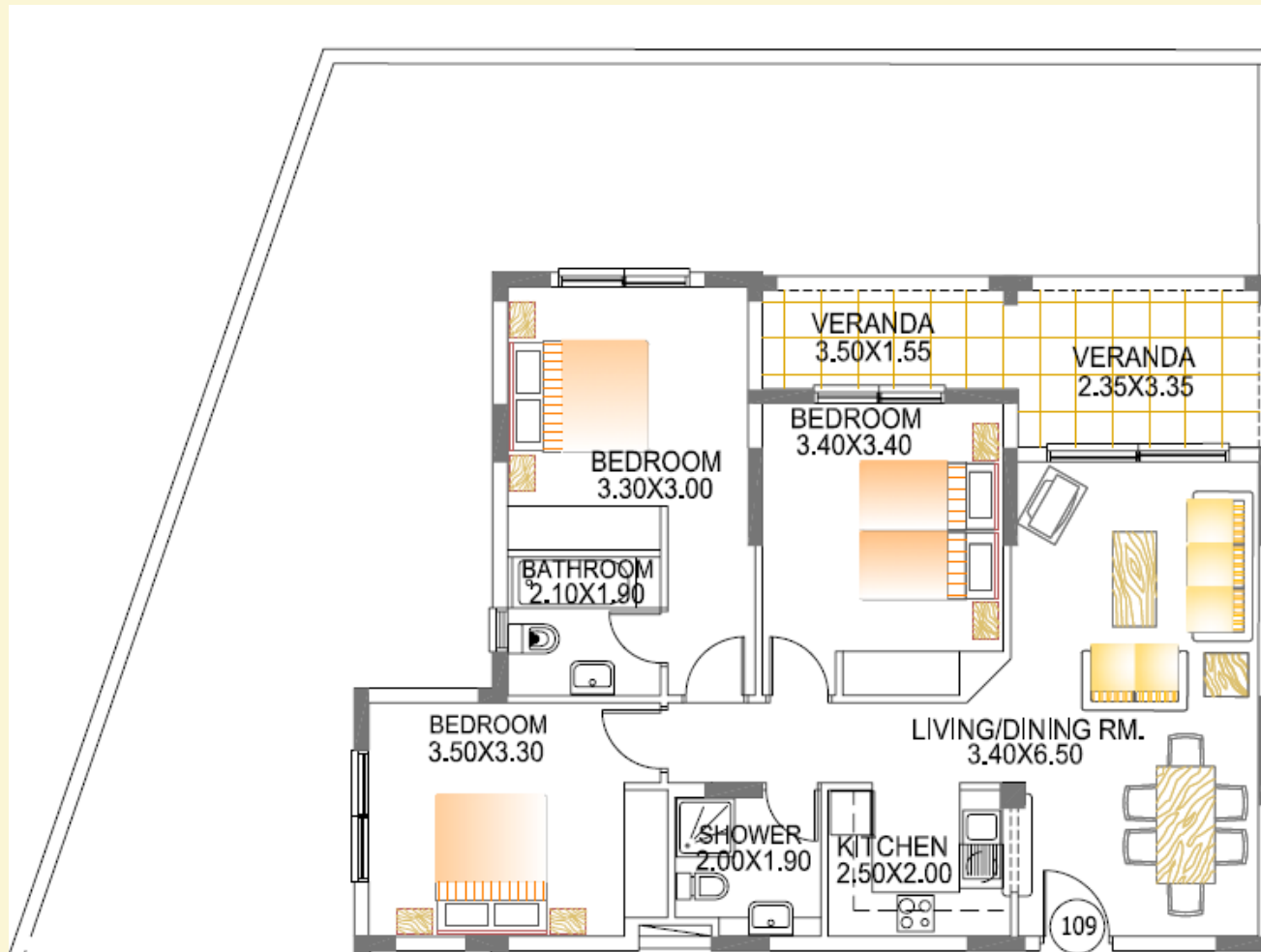
SCALE 1:1

0502

Peyia Chorio 2

Block 1 Apartment 109

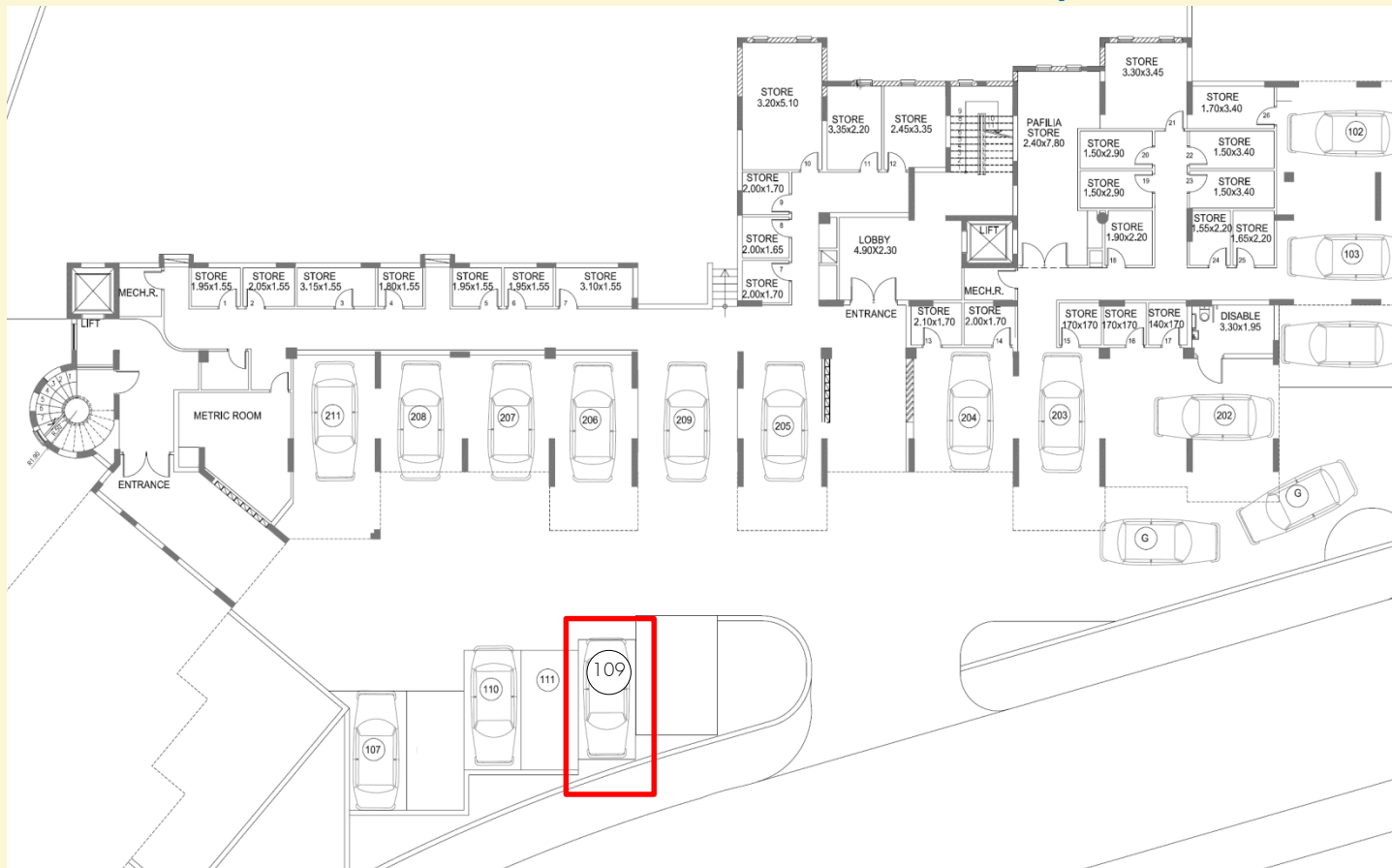
Floorplan



Peyia Chorio 2

Block 1 Apartment 109

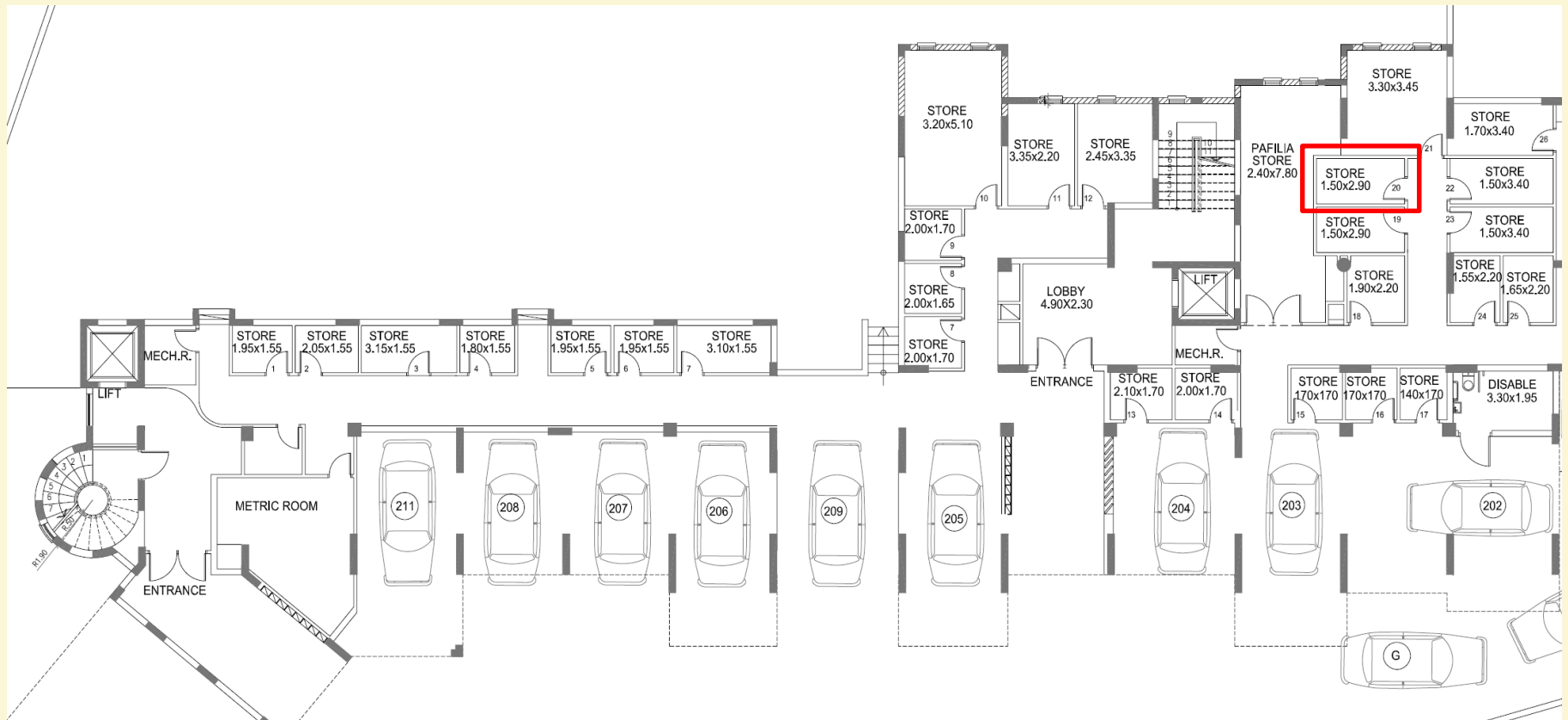
Allocated private parking



Peyia Chorio 2

Block 1 Apartment 109

Private storage room



Peyia Chorio 2 – Apartment 109



Large open plan living/dining area





White kitchen and granite work surface fitted with a stainless steel sink and provision for electrical appliances. Breakfast bar opens onto living area.



Covered veranda outside living area and bedroom leading to private garden area



Private walled garden area with views to the sea



View to the sea from private garden area

Bedroom 1 with double patio doors leading onto covered veranda and garden area.



Bedroom 2 with double patio doors leading onto garden area.



Bedroom 2 fitted wardrobes



Bedroom 2 ensuite bathroom



Bedroom 3 has a window looking onto the mature communal garden area



View from the
window of
bedroom 3





Bedroom 3 has fitted wardrobes from ceiling to floor level

The 2nd bathroom has shower facilities, toilet and washbasin



Facilities

The natural stone paved area surrounding the communal pool, equipped with sun beds and umbrellas provides an ideal space for relaxation...





The landscaped communal areas are maintained and cared for by our services team. Private landscaping and garden maintenance agreements are also available through our service company.

Lifestyle

Peyia sits on the southernmost point of the Akamas National Park, a 230 km² haven for those seeking to get in touch with nature. Peyia is one of the few remaining safe heavens in the world for turtle nesting.



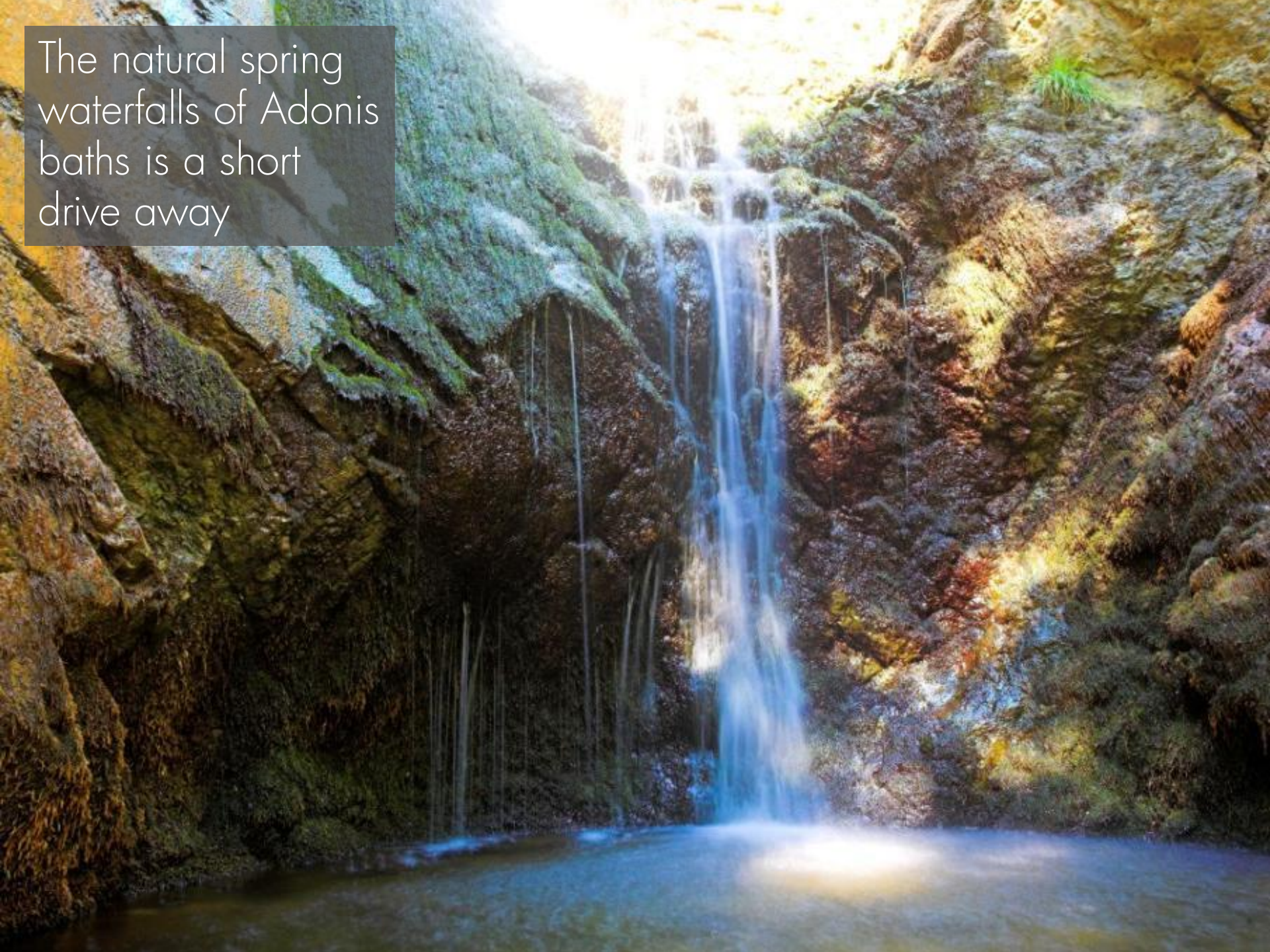


Coral Bay is just a five minute drive or bus ride from Peyia and is home to the most popular sandy beach in the area.

St George's Harbour is a small, traditional fishing harbour situated a few minutes drive from Coral Bay. The Harbour has a fresh fish taverna supplied by the local fishermen and sunbathing facilities on its fascinating shoreline and beaches.



The natural spring
waterfalls of Adonis
baths is a short
drive away





Enjoy golf at its best at our own Minthis Hills Golf Course, just 29 km away

16 km Pafos harbour
37 km Pafos International Airport





INTERCONTINENTAL --- PROPERTY