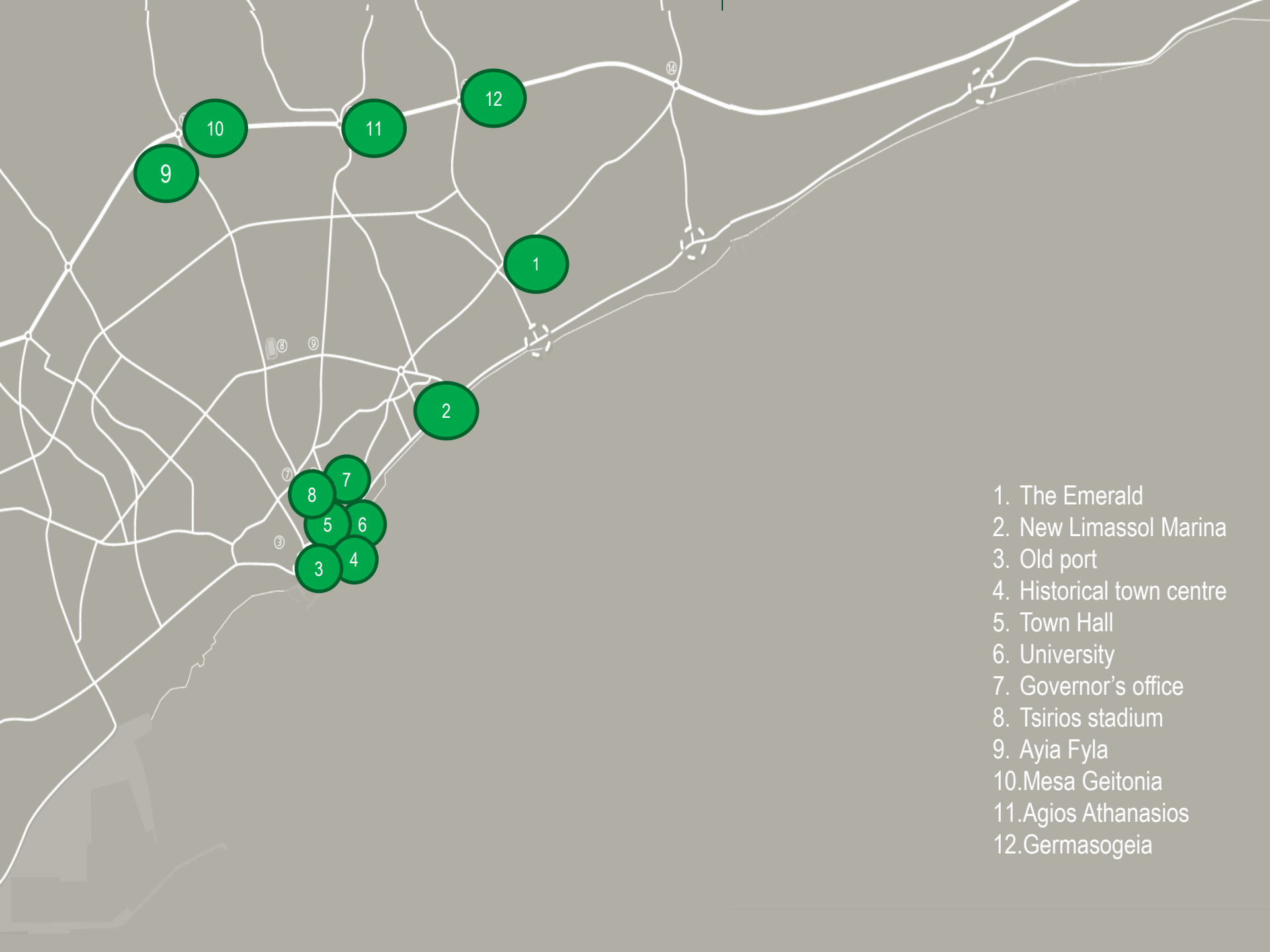
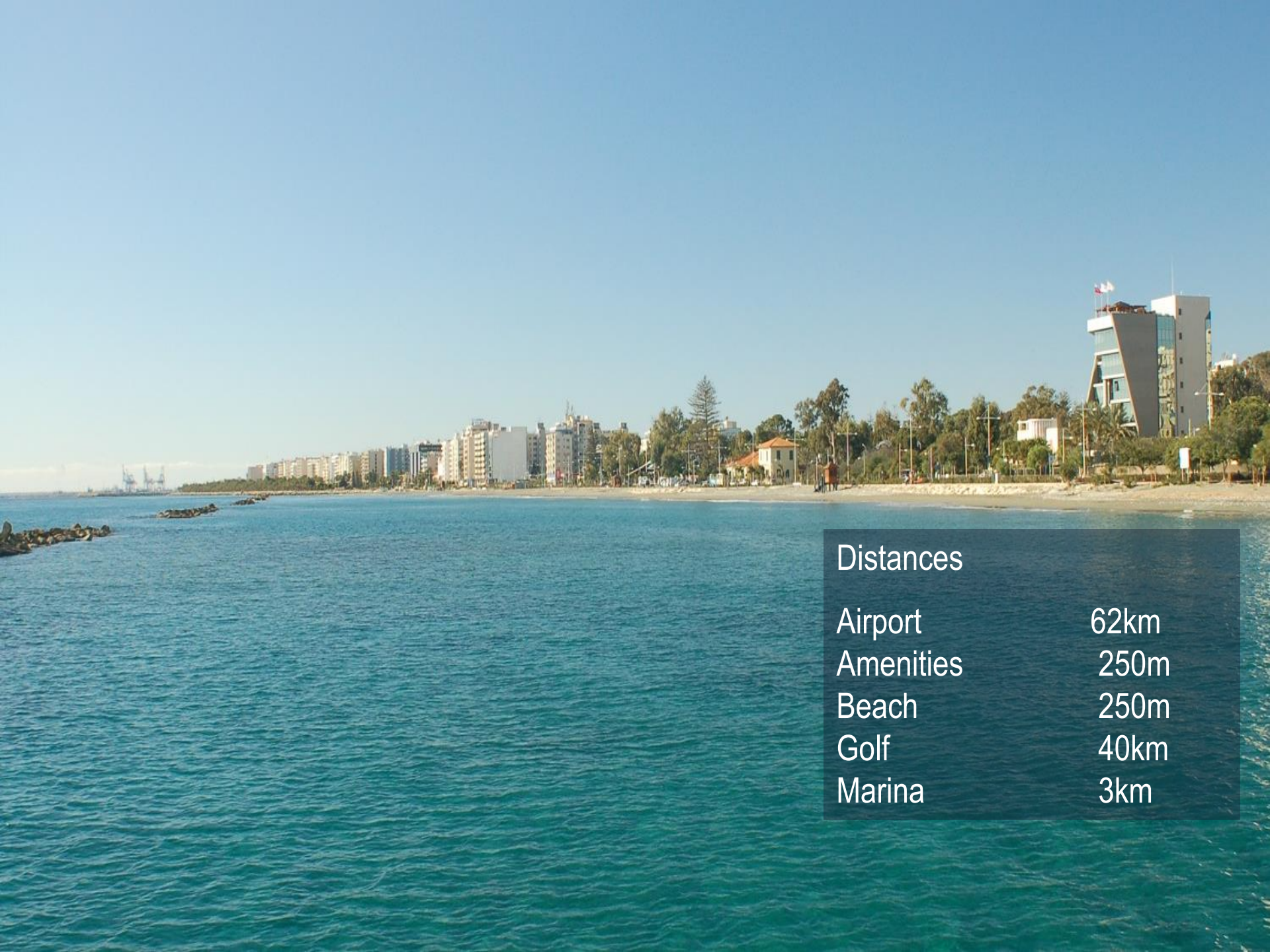


# THE **EMERALD**

Residential Apartments



1. The Emerald
2. New Limassol Marina
3. Old port
4. Historical town centre
5. Town Hall
6. University
7. Governor's office
8. Tsirios stadium
9. Ayia Fyla
10. Mesa Geitonia
11. Agios Athanasios
12. Germasogeia



## Distances

Airport	62km
Amenities	250m
Beach	250m
Golf	40km
Marina	3km









A communal pool set in landscaped grounds makes this private development an oasis in which to relax.

# The Emerald block A

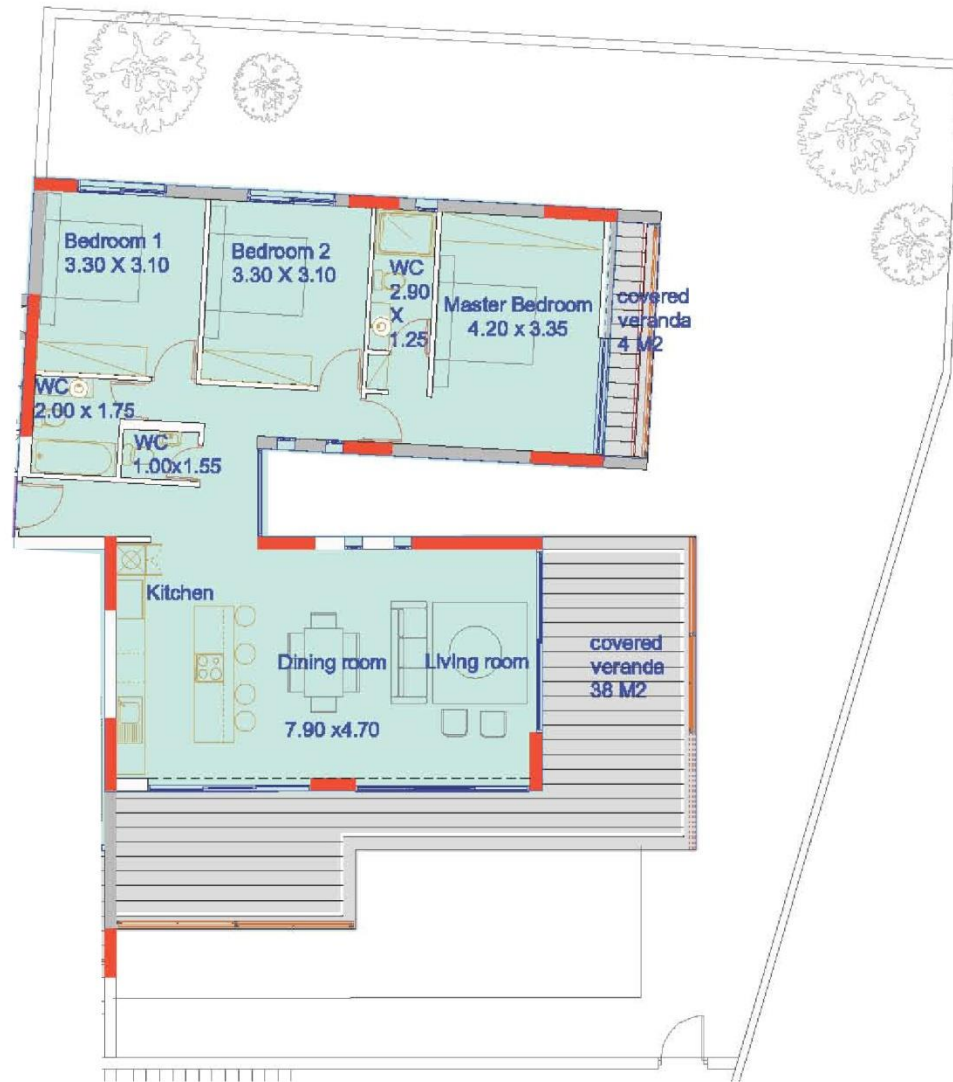
## apartment 001

Floor	Ground
Bedrooms	3
Bathrooms	2
Private garden area	Yes
Private parking	1 covered space
Private storage room	Available on request
Covered internal areas	120.00 m <sup>2</sup>
Covered balcony	20.50 m <sup>2</sup>
Uncovered balcony	26.00



# Site plan





Floor plan



The following slides show the finishes  
for a 3 bedroom ground apartment.



THE **EMERALD**



THE **EMERALD**





THE **EMERALD**



THE EMERALD

- ✓ Luxury Entrance
- ✓ Secure underground parking
- ✓ Elevators to all levels
- ✓ Communal TV and satellite system
- ✓ Communal pool & poolside deck
- ✓ Communal landscaped gardens